

**ALASKA DIVISION OF HOMELAND SECURITY &  
EMERGENCY MANAGEMENT**  
**SITUATION REPORT 23-331 • December 7, 2023**



Toll-Free 1.800.478.2337

Anchorage Area 907.428.7000

SEOC 907.428.7100

<p><b><u>SEOC Preparedness Level</u></b></p> <p>Level 2 – Heightened Awareness</p>	<p><a href="http://ready.alaska.gov">http://ready.alaska.gov</a></p>	<p><b><u>National Terrorism Advisory System:</u></b></p> <p><a href="#">Read the NTAS Bulletin here</a></p>
<p><b><u>Maritime Security (MARSEC)</u></b> Level:1- Minimum Appropriate Security Measures</p>	<p><b>WHO Novel Coronavirus Pandemic (COVID-19):</b> <a href="#">2019 Novel Coronavirus</a></p>	<p><b><u>Alaska Military Installation Force Protection Level:</u></b> FPCON Bravo</p>

(Significant changes from previous situation reports are red.)

**Significant Issues:**

**Wrangell Landside Disaster:**

The City and Borough of Wrangell announced yesterday a suspension of the search for the last missing person from the November 20th landslide. Search and Rescue personnel and a scent detection K9 team will be available in the community and available to reengage with active searching if new information is developed.

A Red Cross 3-person Incident Care Condolence Team continues to work in the community to help those grieving. Two National Crisis Response Canines are expected to arrive in Wrangell later today.

Double lane emergency access routes remain open through the slide area with electrical power to southside residents. Wrangell Police Department continues to conduct road access for affected residents.

**Prince of Wales Island, including City of Klawock and City of Craig:**

Governor Dunleavy amended his November 21, 2023, declaration on Monday to include the entire Southeast Island School District Regional Education Attendance Area, including the City of Craig, Hydaburg, Klawock, and all other impacted jurisdictions and areas on Prince of Wales Island, for individual and public assistance. SEOC continues to assess damages and coordinate state-level support to affected communities.

State Individual Assistance Hotline and website is open for Wrangell and Prince of Wales Island residents, Individual Assistance Applications can be submitted at <https://www.ready.alaska.gov/Recovery/IA> Or by phone 1(844) 445-7131

## **Diomedede – Potential Building Structural Collapse**

SEOC received DOT/PF Engineer's report following the structural assessment and SEOC continues to work with the City of Diomedede, Bering Strait School District, Kawerak, DOT, ANTHC and DEC to evaluate any potential impacts from the building collapse. Diomedede's school continues classes through remote learning.

## **State of Alaska Department of Health (DOH)**

The DOH stands ready to assist with all aspects of public health and in the event of a public health emergency, supported by the SEOC and other state departments as required. For current information, see:

<https://health.alaska.gov/dph/Pages/default.aspx>

<https://health.alaska.gov/dph/Emergency/Pages/prepared/default.aspx>

## **NTAS Bulletin**

The U.S. Department of Homeland Security issued an updated National Terrorism Advisory Bulletin on May 24, 2023. The current and expired bulletins can be viewed at the below link.

<https://www.dhs.gov/national-terrorism-advisory-system>

## **Travel Alerts and Conditions**

For current driving conditions, dial 511 or link to <https://511.alaska.gov/>

## **Barry Arm Landslide / Tsunami Risk**

For the latest information on the Barry Arm Landslide and Tsunami risk, click here:

<https://dggs.alaska.gov/hazards/barry-arm-landslide.html>

## **Earthquakes**

United States Geological Service (USGS) Earthquake Information: <http://earthquake.usgs.gov/>

National Tsunami Warning Center: <http://tsunami.gov/>

## **Alaska Volcanoes**

**Great Sitkin** Alert Level: **Watch** and Aviation Color Code: **Orange**

**Shishaldin** Alert Level: **Watch** and Aviation Color Code: **Orange**

**Trident** Alert Level: **Advisory** and Aviation Color Code: **Yellow**

**Katmai** Alert Level: **Normal** Aviation Color Code: **Green**

For Alaska Volcano updates, go to: <https://www.avo.alaska.edu/>

## **Air Quality Index (AQI) Advisories**

For the most up to date Air Quality Index Advisories:

<http://dec.alaska.gov/Applications/Air/airtoolsweb/Home/Index>

## **Spills of Oil and Hazardous Substances**

The Alaska Division of Environmental Conservation (ADEC) Spill Prevention and Response page is located at:

<https://dec.alaska.gov/spar/>

## Alaska Cyber Security Information

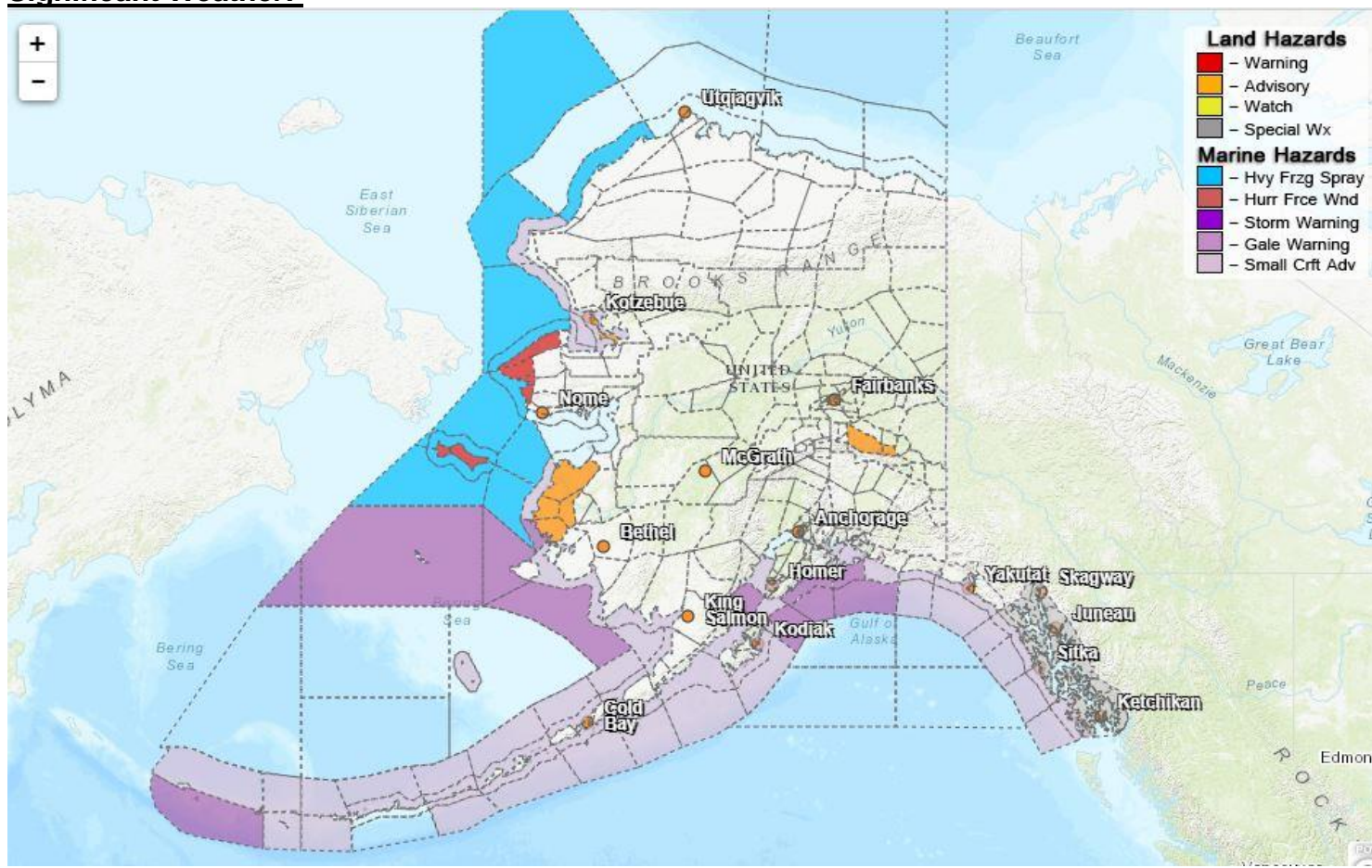
State Employees may sign up for cyber security notifications and alerts at <https://oit.alaska.gov/security>

Cybersecurity and Infrastructure Security Agency (CISA)-Cybersecurity Services and Tools: [www.cisa.gov/free-cybersecurity-services-and-tools](http://www.cisa.gov/free-cybersecurity-services-and-tools)

## Avalanche Hazards:

For more information and the most current avalanche conditions go to <https://alaskasnow.org>

## Significant Weather:



### **Special Weather Statement: Anchorage**

- Localized areas of dense fog have developed across mainly northern and western parts of Anchorage this morning.
- Visibility as low as a quarter mile will be possible until fog lifts, mainly on the west side of town and along portions of the Glenn Highway at times.

### **Special Weather Statement: Skagway, Haines, Klukwan; Glacier Bay; Eastern Chichagof Island; Cape Fairweather to Lisianski Strait; Sitka, Admiralty Island, Juneau; Petersburg; Western Kupreanof and Kuiu Island, Prince of Wales Island, Wrangell, Ketchikan Hyder and Annette Island**

- A strong, developing storm force low moving up from the south Saturday will bring strong winds, high seas, and heavy rain for the southern panhandle and outer coast, the southern panhandle and outer coast are likely to see the strongest winds at this time.
- The southern panhandle will see these increased winds and rain rates of 0.2 to 0.4 inches per hour early Saturday morning.

- Wind gusts of 50 to 60 mph over marine waters and some land areas are likely. Small streams and rivers are expected to rise across the southern panhandle.

#### **Wind Advisory: Eastern Alaska Range North of Trims Camp**

- Snow and blowing snow with reduced visibility expected until 6AM December 8<sup>th</sup>. Visibility one half mile or less at times. North winds gusting to 35-45 mph with gusts up to 60 mph expected.
- Travel could be very difficult. Areas of blowing snow could significantly reduce visibility. Use extra caution when driving, especially if operating a high-profile vehicle and secure outdoor objects.

#### **Winter Storm Warning: Bering Strait Coast, Diomedede, Shishmaref, and St. Lawrence Island**

- Winter Storm Warning the West Coast through 3 PM Saturday with south winds gusts up to 65 mph changing to north winds Thursday.
- Snow accumulation up to 7 inches and whiteout conditions at times beginning this afternoon and continuing through Saturday. This will make travel very difficult or impossible.
- Strong north winds and temperatures in the teens Thursday through Saturday may lead to freezing spray and ice accumulation at Diomedede.

#### **Winter Weather Advisory: Yukon Delta Coast**

- Snow and blowing snow with low visibility. Total snow accumulations of 2 to 4 inches. Visibility one half mile or less at times. Winds gusting as high as 50 mph until 6 AM Friday.
- Strong northwest winds this afternoon into early Friday could lead to elevated surf pushing ice onto the beach. People with valuables on beach should move them further inland. This could particularly impact Scammon Bay.

For more information and the most current weather, Watches / Warnings / Advisories go to:

<https://www.weather.gov/arh/>

**The Next Situation Report** will be **December 8, 2023**. A significant change in the situation or the threat level will prompt an interim report. This report is posted on the internet at

<https://ready.alaska.gov/sitrep>.

To register for email distribution, go to <http://list.state.ak.us/mailman/listinfo/dhsem.situation.report>.

Direct questions regarding this report to the SEOC at 907-428-7100 or [seoc@alaska.gov](mailto:seoc@alaska.gov)